



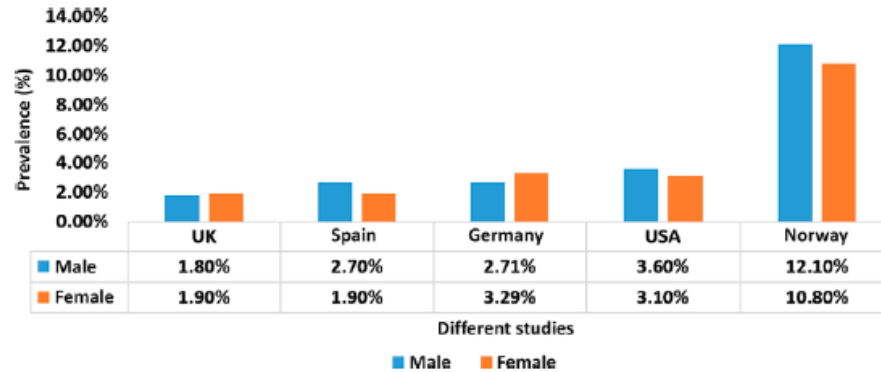
Inhibitec

Anticuerpos S.L.

***Towards an Efficacious Treatment  
of Psoriasis***

# PROBLEM

## Psoriasis



Psoriasis is a chronic inflammatory disorder affecting the skin and joints that has a major impact on socioeconomic aspects of a patient's life. Patients with psoriasis have a high risk of depression, anxiety, and may develop suicidal tendencies.

More than 125 million (2–3%) individuals globally are affected by psoriasis.

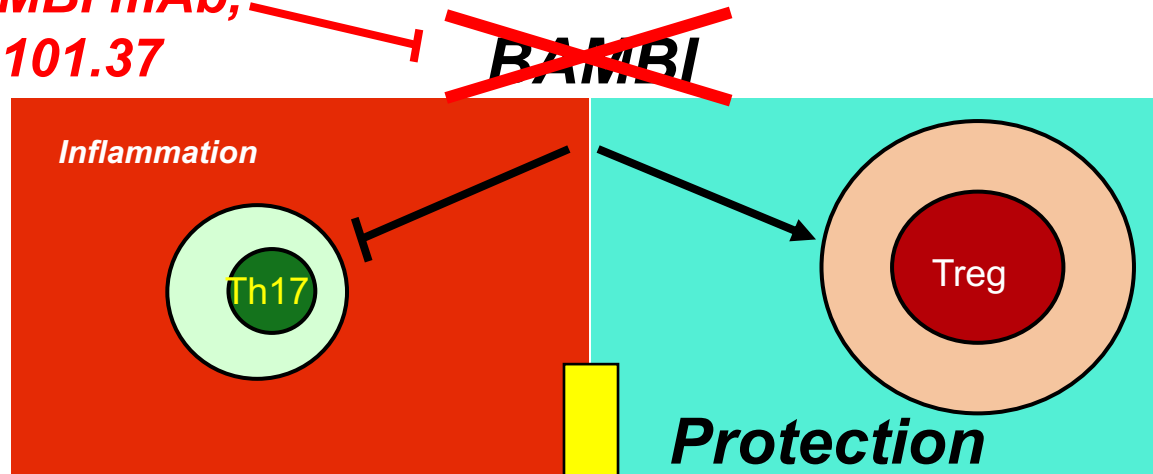
A significant number of patients with severe psoriasis remain unresponsive to the existing therapies and the appearance of drug resistances is frequent.

**Urgent need: to identify new therapeutic targets and inhibitory drugs.**

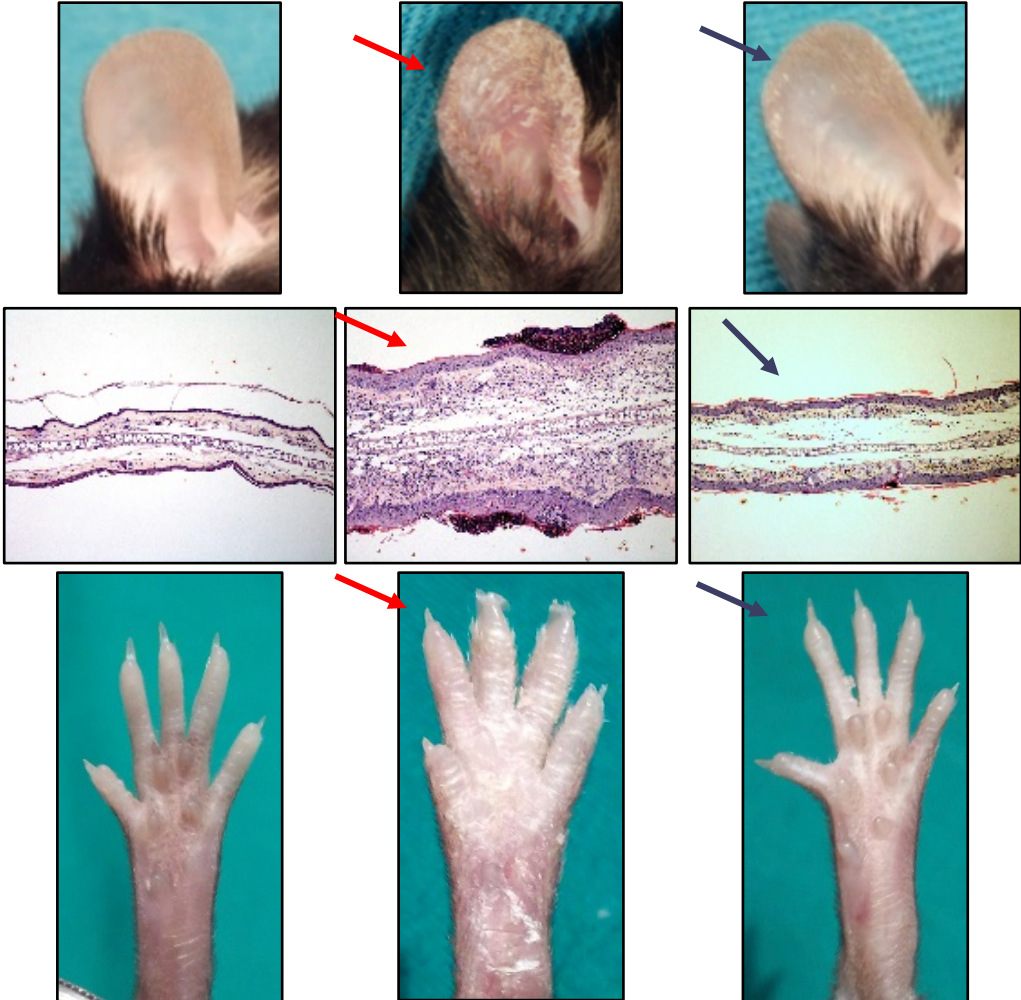
# OUR TECHNOLOGY AND SOLUTION

**Our Target: BAMBI (*B*MP and *A*ctivin *M*embrane-*B*ound *I*nhibitor)**

**Anti-BAMBI mAb,  
Clone B101.37**



## Murine Psoriatic Arthritis



**Normal Mice**

**Untreated  
Diseased Mice**

**B101.37-Treated  
Diseased Mice**

## *Introduce B101.37 into clinical phases for the treatment of Psoriasis in humans*

**Humanization of B101.37 and Preclinical** studies in two years.

Design of a strategy for **Regulatory requirements** and their accomplishment

**Sustainable funding** model up to 2 m€ to be raised in European funds and grants

Search for **strategic partners** to reach and develop clinical Phase 1



**Business and Scientific multi-skilled team: Pharma and Biotech industries, M&A and Funding expertise gives Inhibitec-Anticuerpos a promising and successful future**